



IPC0CX_PX User Manual

Version: V5.1.25.5

Catalog

Safety Instruction.....	3
Introduction.....	5
1、Install The IPCOCX_PX Controls.....	5
1.1 Preparation Before Install.....	5
1.2 Install The IPCOCX_PX Controls.....	5
2、Interface operations and Usage:.....	11
2.1.2、Upgrade and Reboot.....	12
2.1.3、Log Searcher.....	12
2.1.4、Alarm.....	13
2.1.5、Date Time.....	13
2.1.6、Motion detect.....	14
2.1.7、Privacy Covered.....	15
2.1.8、Image Settings.....	15
①、Brightness/Contrast/Saturation/Sharpness.....	16
②、White Balance.....	16
③、AE Mode.....	17
④、Sensor Linear WDR.....	17
2.1.9、Service Settings.....	17
①、SMTP Email Settings.....	18
②、FTP Server Settings.....	18
③、Enable DDNS.....	19
2.2.0、Audio Settings.....	19
2.2.1、User Management.....	20
2.2.2、Network.....	20
2.2.3、Video Settings.....	21
2.2.4、Record.....	22
2.2.5、Capture.....	22
2.2.6、Strolage.....	22
3、Frequently Asked Questions.....	23

Statement:

Thanks for purchasing from us. Please feel free to contact our service whenever you need help.

This is universal product manual for Network HD Cameras. Features and functions vary with different products, please refer to our physical commodity and the fast manual.

This manual is your reference for operations and encodings. Related functions, specific orders, detailed menu-tree as well as fast manual are included. Please read it before installation or use.

This manual might contain some technical or print errors. Any enhancement in product features shall be added into the manual consistently without further notice.

Safety Instruction

This manual is intended to ensure that user can use the product properly without danger or any property loss. Please read it carefully and take care of it for further reference.

Precaution measures are divided into “warnings” and “cautions”, as below:

Warnings: Neglecting any of the warnings may cause death or serious injury.

Cautions: Neglecting any of the cautions may cause injury or equipment damage.

 <p>Warning Follow these safeguards to avoid death or serious injury</p>	 <p>Caution Follow these precautions to Prevent potential injury or Property loss</p>
---	--



Warning

Electrical safety regulations of the nation and the region must be strictly followed during installation or use.

1. Please use the matched power adapter from standard company.
2. Do not connect multiple IPCs with one single power adapter(Overload for adapter may lead to over-heat or fire hazard.
3. Shut down the power while connecting or dismounting the device. Do not operate with power on.
4. The device should be firmly fixed when installed onto the wall or beneath the ceiling.

5. Shut down the power and unplug the power cable immediately when there is smoke, odor or noise rising from the IPC. Then contact the dealer or service center.
6. Please contact the local dealer or latest service center when IPC works abnormally. Do not attempt to disassemble or modify the device yourself. (We shall shoulder no responsibility for problems caused by unauthorized repair or maintenance)



Cautions

1. Do not drop anything onto the dome, avoid it from physical strike. Keep it away from high electromagnetism radiation surroundings. Do not install it at vibration surface or places subjecting to strike. (Ignorance can cause equipment damage).
2. Do not aim the camera at ultra-bright objects, such as the sun, filament lamp, or will damage the camera.
3. Use it inside and keep it away from rain and moisture
4. Avoid exposing to direct sunlight, poor-ventilation or heat source such as heater, radiator(Ignorance can cause fire hazard)
5. To avoid physical damage, extreme environment such as lampblack, water vapour, too hot or dusty are not allowed.
6. Please use soft and dry cloth to clean the shell. Use neutral cleaner instead of alkaline when the dirt is difficult to get rid of.

Introduction

This manual describes in detail the IPCOCX_PX controls site installation, usage and interface operations.

1、Install The IPCOCX_PX Controls

1.1 Preparation Before Install

In ensuring the IPC and the current user's computer after completion of all the hardware connection and power equipment normal, open the computer, run ping the IP address of the IPC (Note: the IP address of the IPC in LAN must be unique). Such as IPC IP for 192.168.1.168, run ping 192.168.1.168. If there is a response to the IPC as shown in the figure below, said the network connection is normal, you can download the plug-in.



```
C:\Windows\system32\cmd.exe
C:\Users\User>ping 192.168.1.168

正在 Ping 192.168.1.168 具有 32 字节的数据:
来自 192.168.1.168 的回复: 字节=32 时间<1ms TTL=64
来自 192.168.1.168 的回复: 字节=32 时间=1ms TTL=64
来自 192.168.1.168 的回复: 字节=32 时间<1ms TTL=64
来自 192.168.1.168 的回复: 字节=32 时间=1ms TTL=64

192.168.1.168 的 Ping 统计信息:
    数据包: 已发送 = 4, 已接收 = 4, 丢失 = 0 (0% 丢失),
    往返行程的估计时间<以毫秒为单位>:
        最短 = 0ms, 最长 = 1ms, 平均 = 0ms

C:\Users\User>
```

1.2 Install The IPCOCX_PX Controls

Please open the IE browser and input the IP address of IPC in the address bar. (For the first time to use the default address is: `http://192.168.1.168`), you will be prompted to download information. As shown in figure 1:

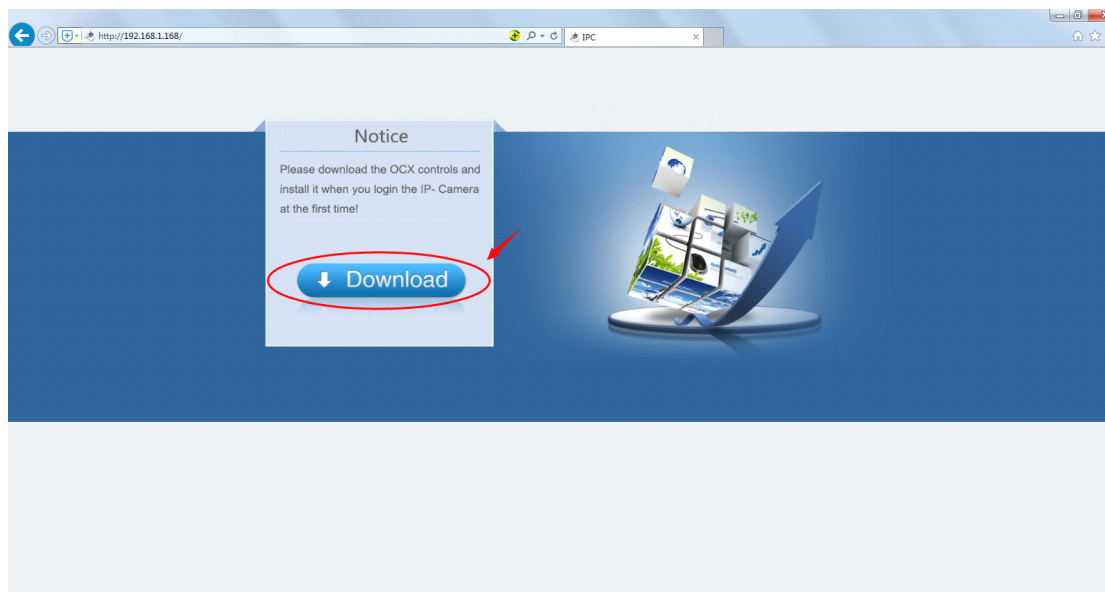



图 1

Click  to download, and you can choose "Run" or save directly the installation. As shown in figure 2: click "Run"

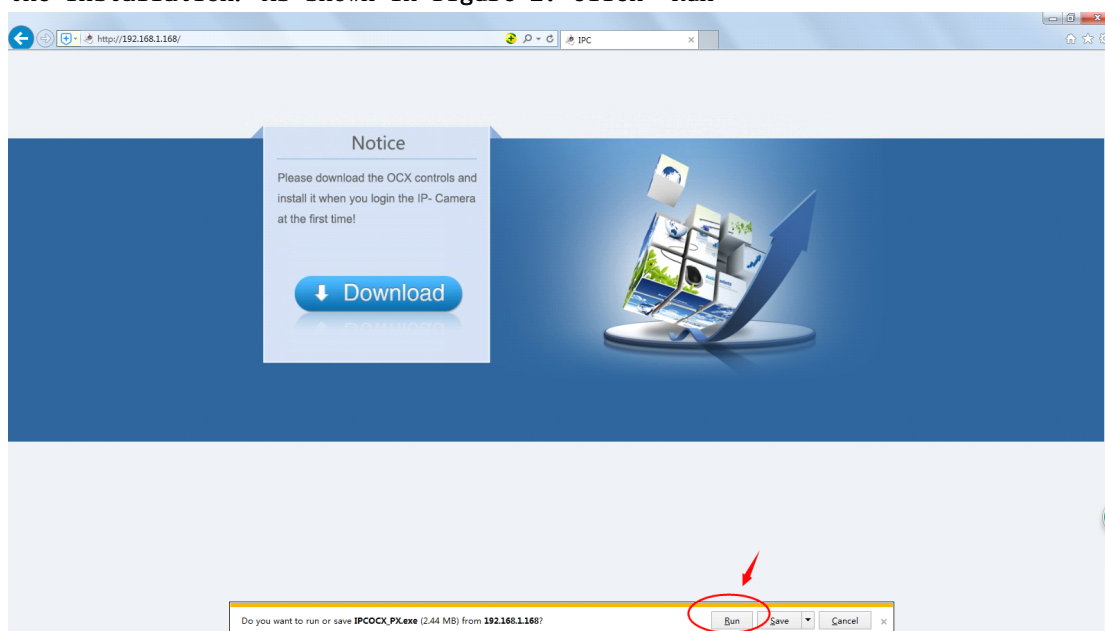


图 2

Will pop up the Setup Wizard after click "Run" , shown in the figure 3-8 below:

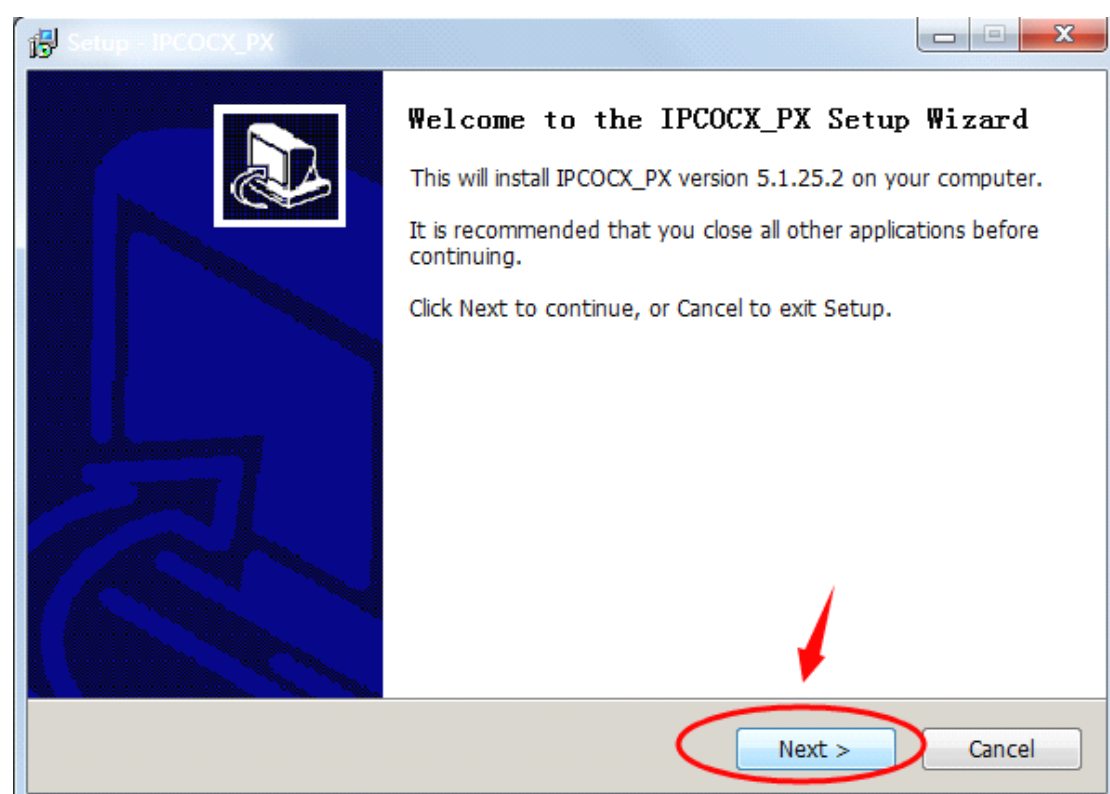


图 3

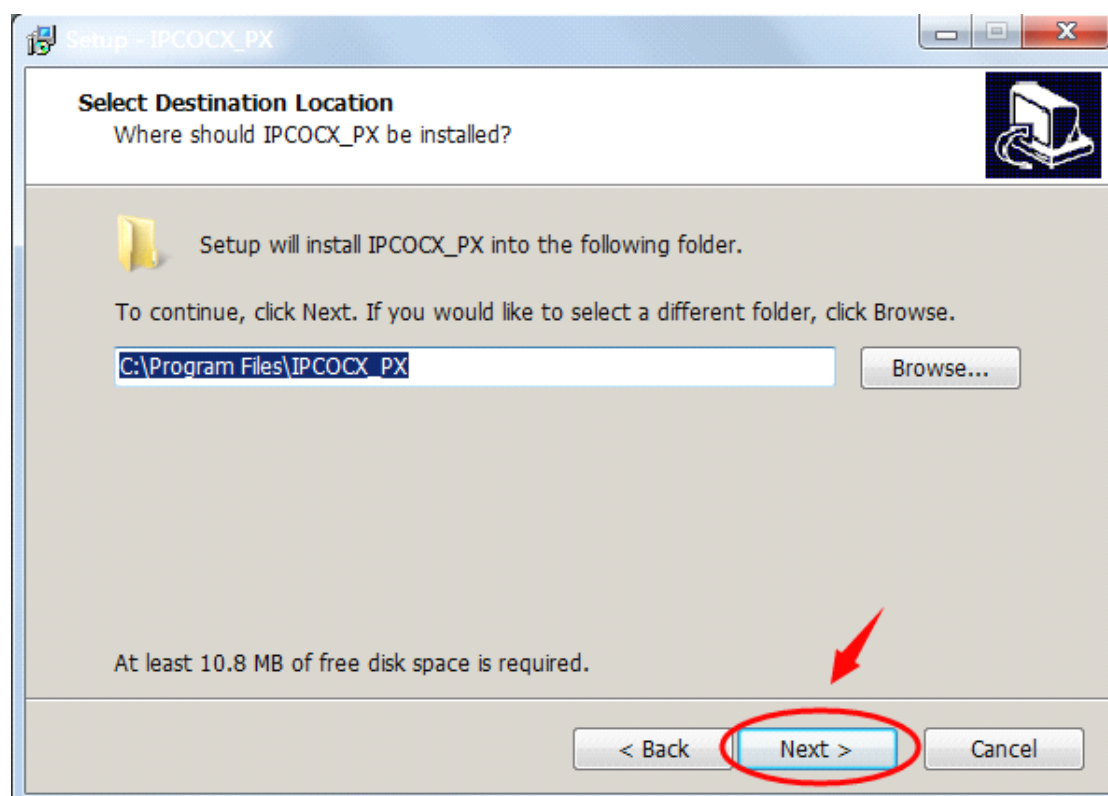


图 4

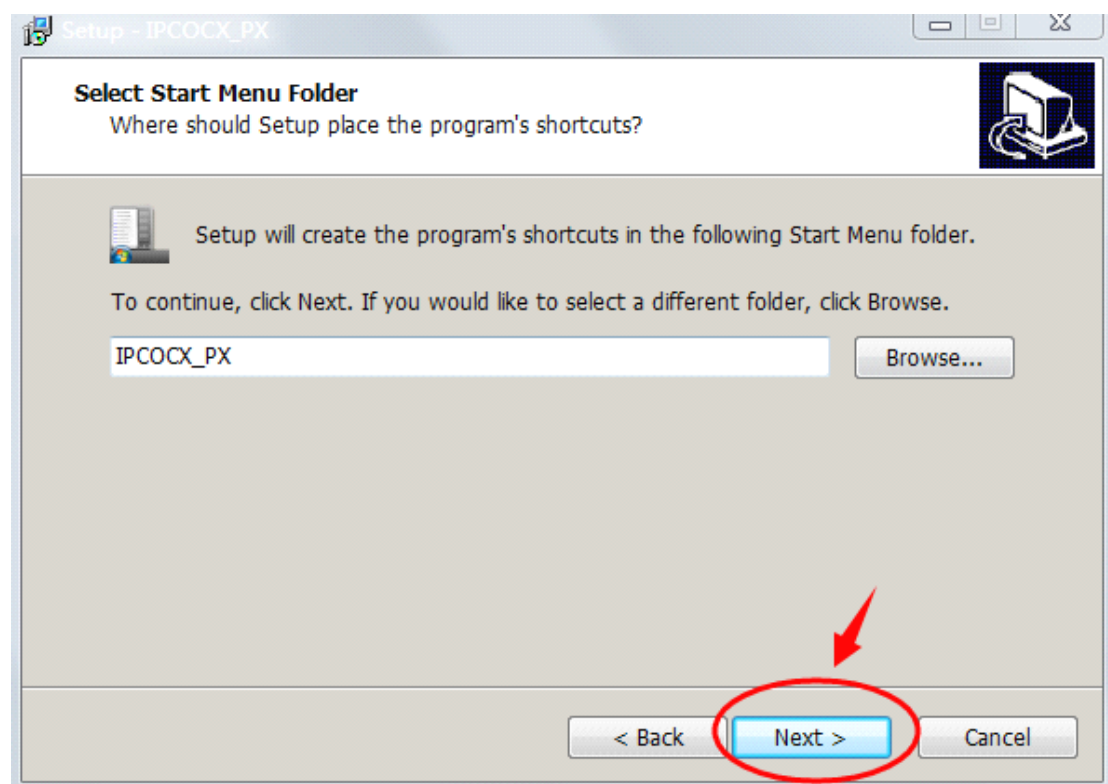


图 5

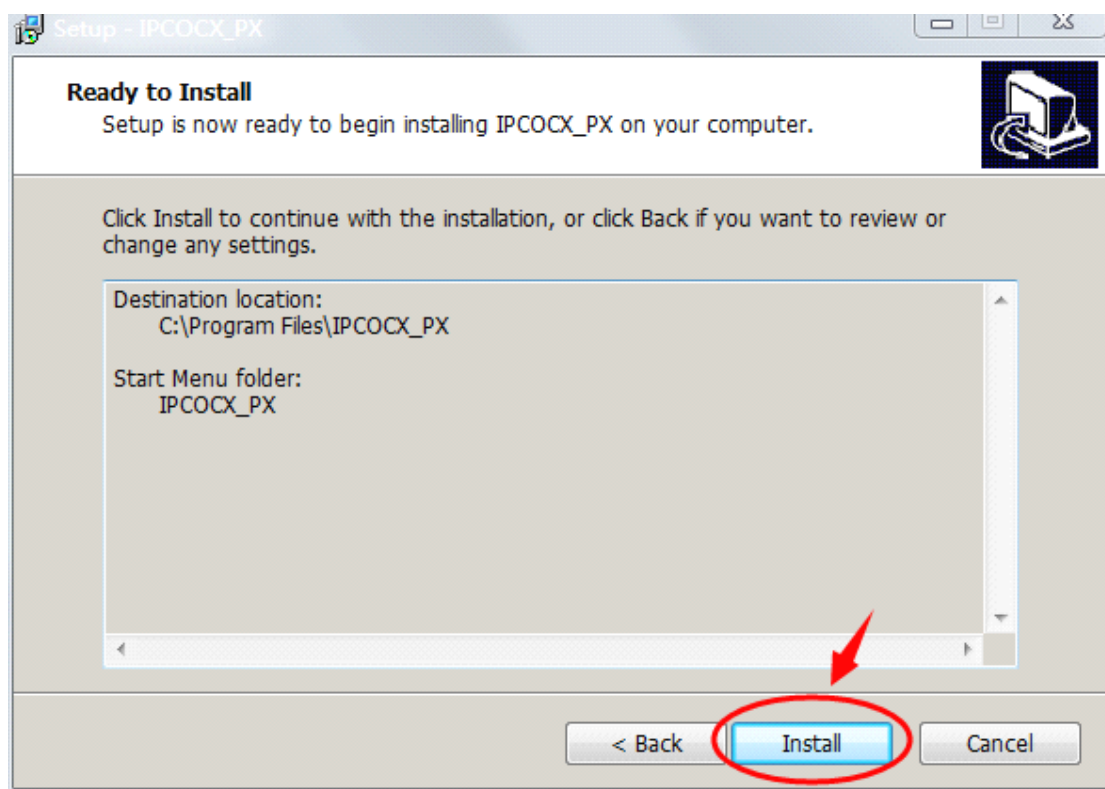


图 6

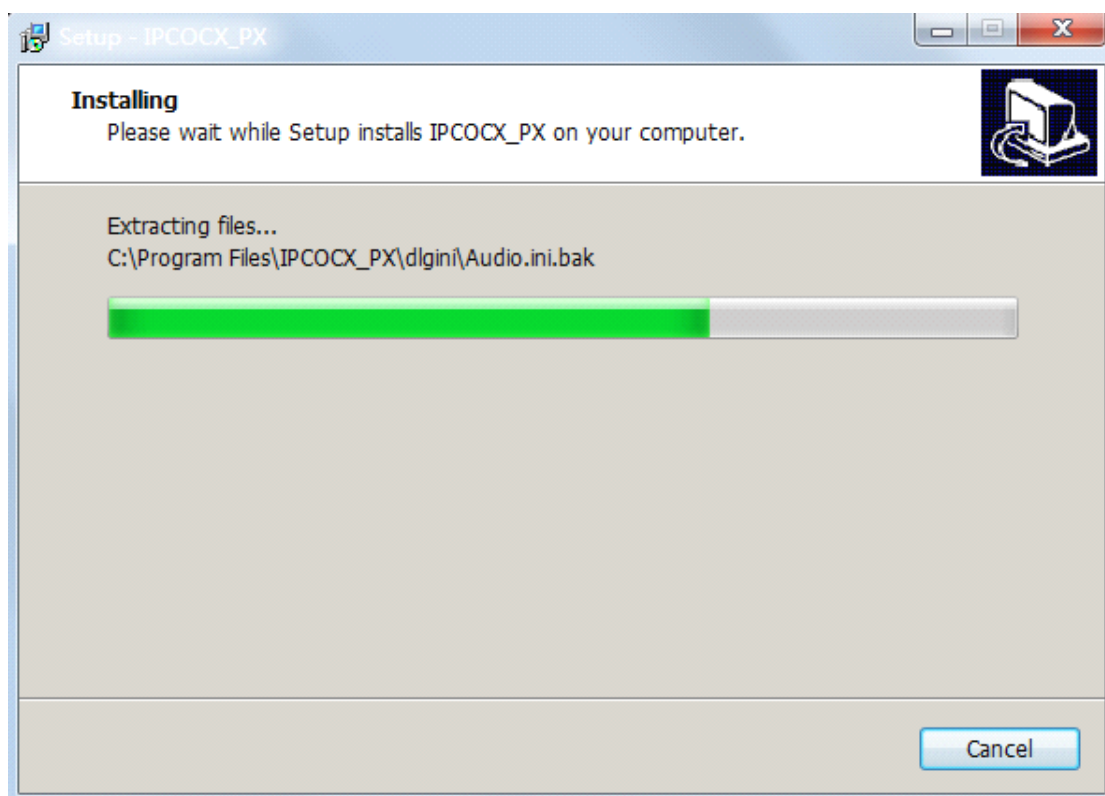


图 7

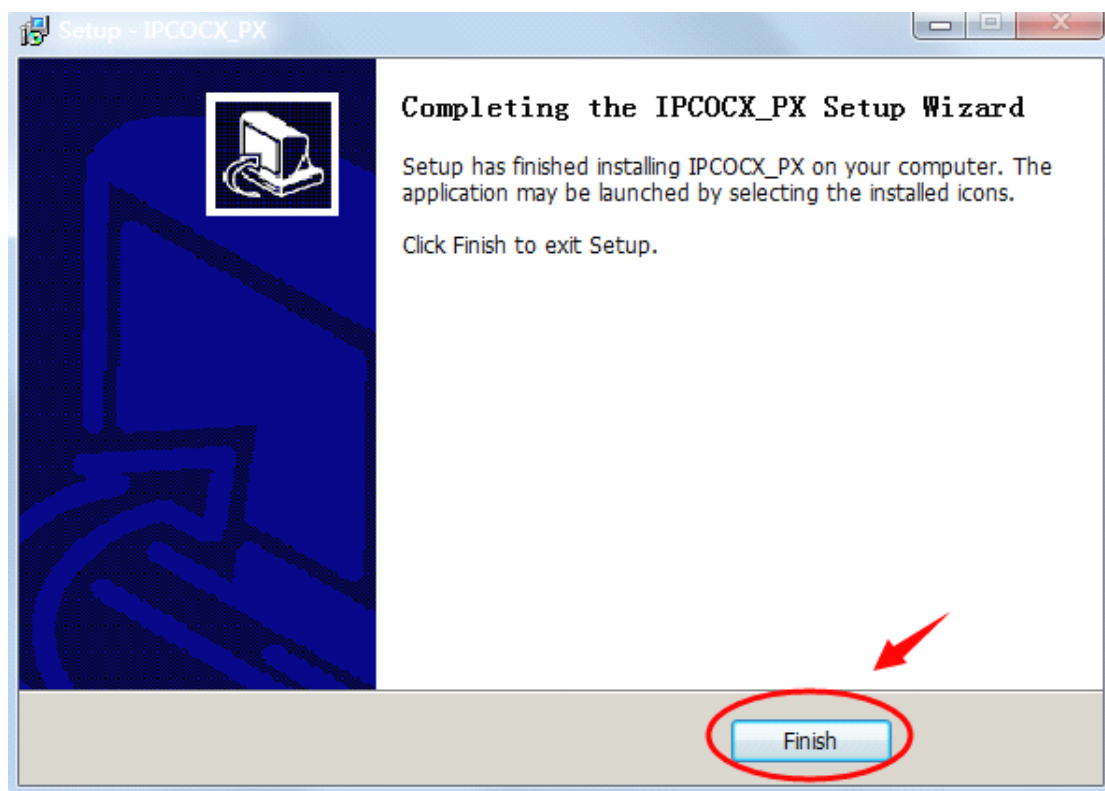


图 8

Click "Finish" and login page again, enter the login interface as shown in figure 9:

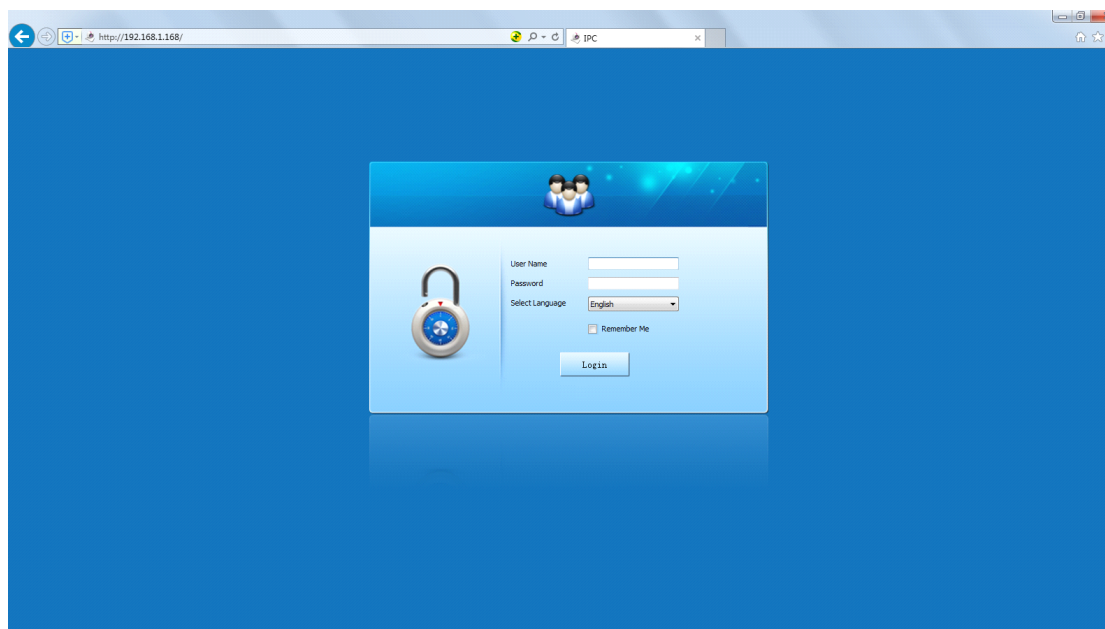


图 9

Note: if the system prompt "installation failure", please uncheck the "cancel

protection mode" in the setting safety of "Internet options" and enter the "custom level" ActiveX control Settings as shown in figure 10 to 11, and reinstall IPCOCX_PX after save Settings.

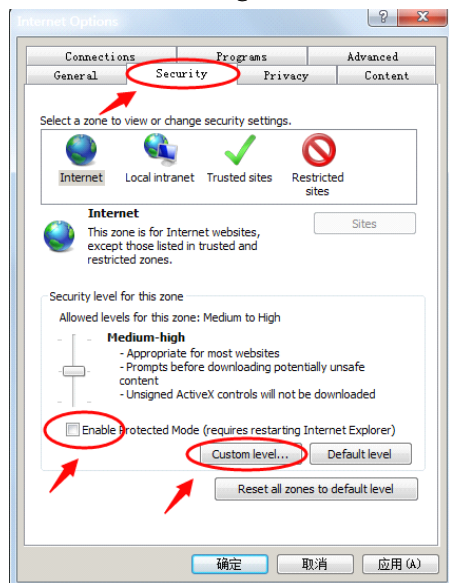


图 10

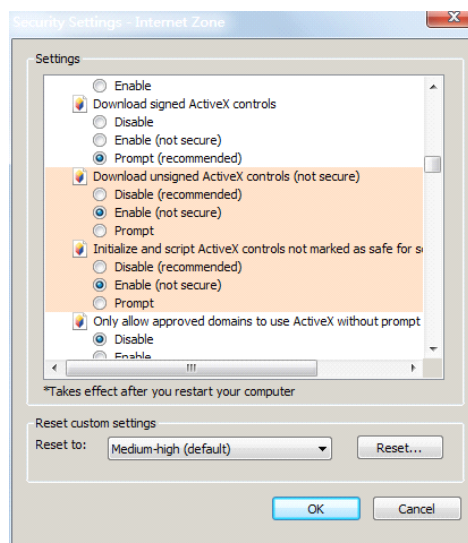


图 11

2、Interface operations and Usage:

2.1.1、Login

Login for the first time must input account: " admin " and password: " admin " on the login interface, after the success of login interface as shown in figure 6:

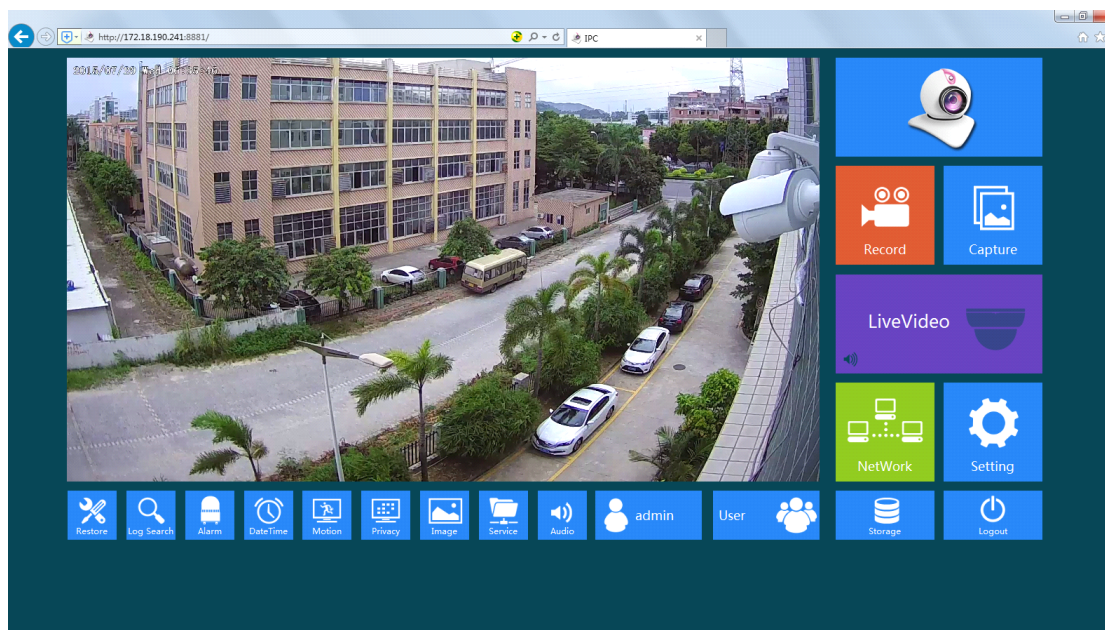



图 6

2.1.2、Upgrade and Reboot

Click  to login in the upgrade and reboot interface, where you can be "Reboot System", "Restore Factory Settings", "Scheduled Reboot", function setting, you can also view the current firmware version of the IPC and the software version information. As shown in figure 7:

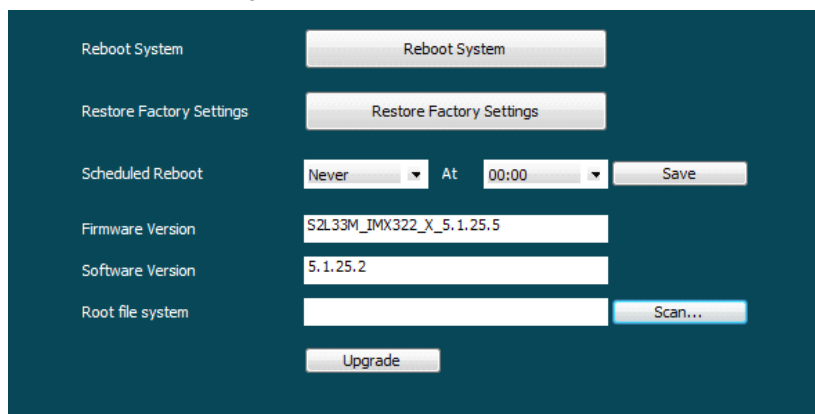
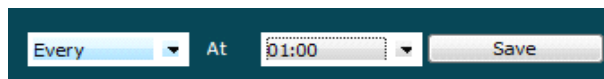


图 7

【Reboot System】 The IPC will restart again automatically after clicking "Reboot System".

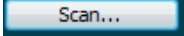
【Restore Factory Settings】 The IPC will restore to factory default parameters automatically after clicking this option. (Please operate this function carefully).

【Scheduled Reboot】 It can be set "cycle" and "time" from the pull down menu, such as setting "every day to restart in 1:00 am", click to save. The IPC will be restart once a day in 1:00 am.

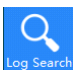


【Firmware Version】 It is the current program version of the IPC.

【Software Version】 It is the current program version of the OCX control.

【Root file system】 Clicking  to add upgrade file package, and upgrading the IPC program. (Please careful operation, the error of upgrade file will cause equipment system operate abnormally)

2.1.3、Log Searcher

Click  to login in the log searcher interface.

[illegible]


【Search】 It can find running record of IPC from the start time to end time.

【Clear】 Clicking clear button to empty all logging.

【Export into file】 To save the current log in txt format which in searching.

2.1.4、Alarm



Click  into the alarm settings. Here you can realize the **【Motion Detection】**, **【Upload Via FTP】**, **【Upload Via SMTP】**, and other functions. Among them, **【Upload Via FTP】** have a JPEG image format and AVI video file formats to choose. **【Upload Via SMTP】** have MESSAGE information format, JPEG image format and AVI video file formats to choose. Format can be selected in the drop-down menu. After completion of setting ,clicking **【OK】** .


<input checked="" type="checkbox"/> Enable Alarm	Alarm Duration	10 seconds
<input checked="" type="checkbox"/> Motion Detection		
<input type="checkbox"/> Upload Via FTP	File Format	JPEG
<input type="checkbox"/> Upload Via SMTP	File Format	MESSAGE

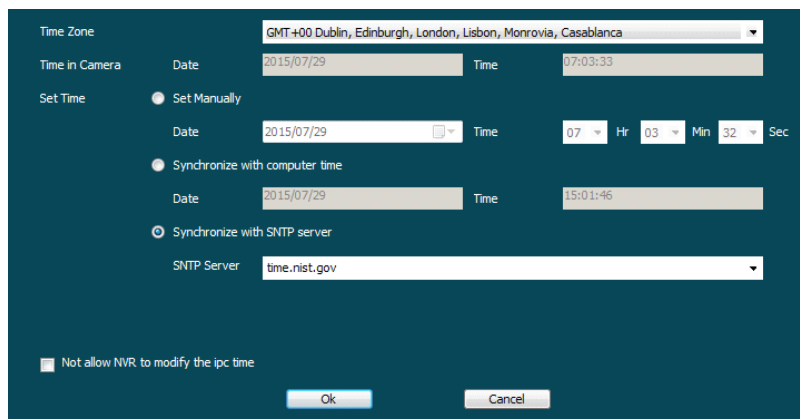
Ok

Cancel

2.1.5、Date Time



Click  into the date time settings.



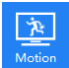
【Set Manually】 Setting the date and time of the IPC manually. Click on the "confirm" after completing the settings.

【Synchronize with computer time】 The IPC will synchronize with the computer time and date that your connect currently. Click on the "OK" after completing the settings.

【Synchronize with SNTP server】 The time of IPC will synchronization with network, and you can change the different time zones. (This feature requires that IPC network environment can connect to the Internet.) Click on the "OK" after completing the settings.

【Not allow NVR to modify the ipc time】 The time of IPC will be not affected by the backend storage devices (such as NVR and DVR, etc.) after check this option. The IPC 's time will be running according to the user settings.

2.1.6、Motion detect

Click  into the motion detection settings.




【Select All】 Motion detection range to monitor all of the area, which Consists of 396(22*18) small squares. Of course you can choose a combination of several small squares among them as motion detecting area.

【Clear All】Clearing all the motion detecting area that selected currently.

【Restore】Restoring to choose at the next higher level.

【Sensitivity】Can be selected 0 to 10, and the higher the value, the greater the sensitivity.

2.1.7、Privacy Covered

Click here , you will see the following interface, as Figure 8.

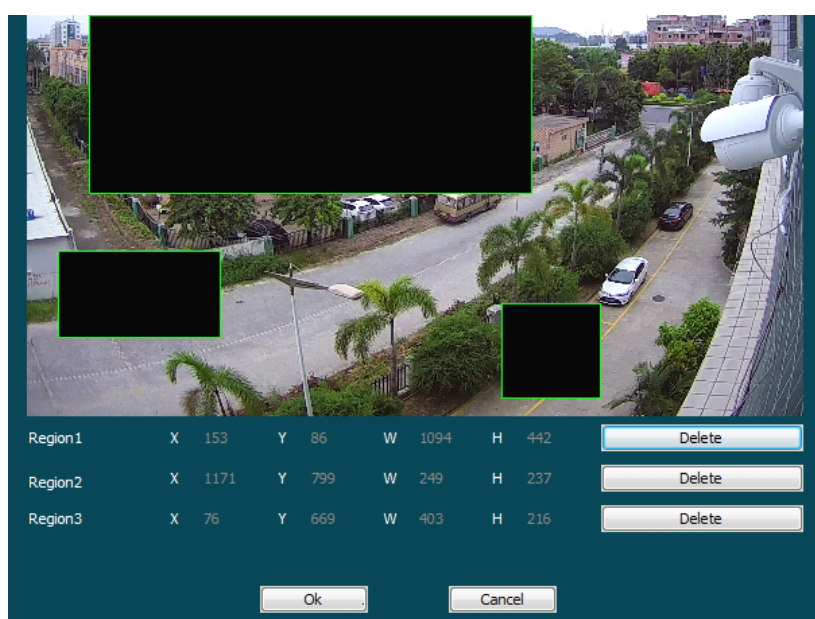
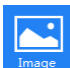
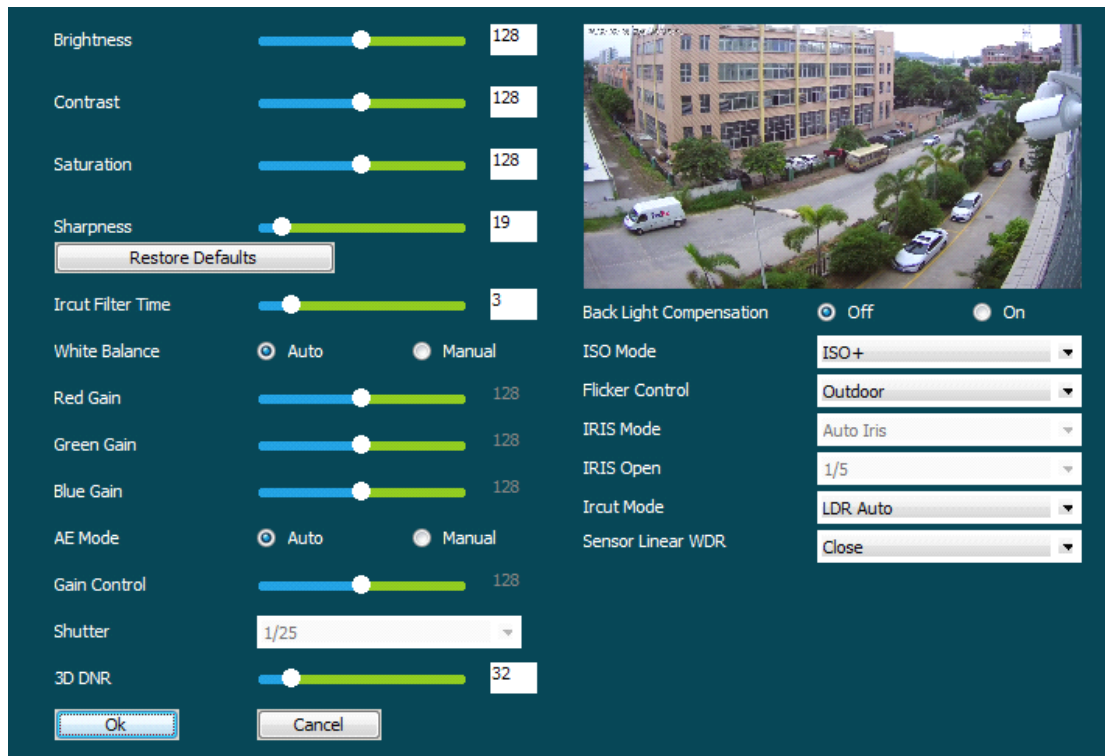


图 8

Pressing the left mouse button and drag to select area in the region. Region 1、Region 2、Region 3 bellow will show the corresponding coordinates, width, and height of the region. If you want to delete a region, click on the corresponding 【Delete】 button, Click 【OK】 to complete the setting.

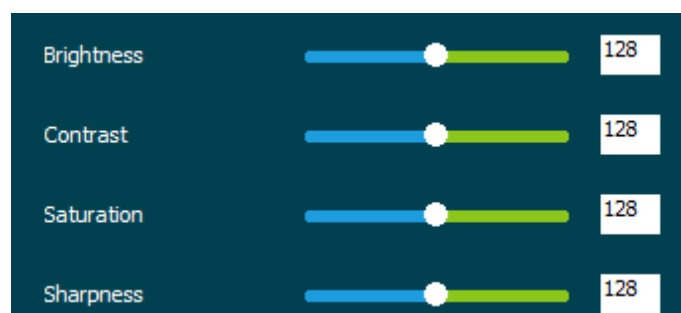
2.1.8、Image Settings

Click  into the image setting. Many of the parameters can be set up. As following figure



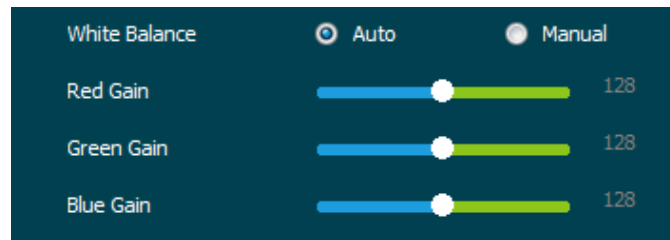
①、Brightness/Contrast/Saturation/Sharpness

You can input the value manually to set brightness, contrast, saturation, sharpness. These parameters shall be set according to the actual environment. The scope of valid values are from 0 to 255, you can drag the slider to set, and the default value is 128.



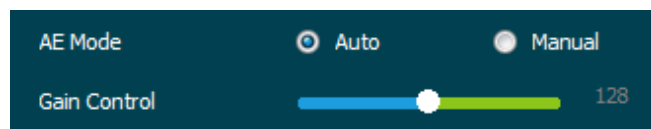
②、White Balance

It have automatic mode and manual mode, the manual mode when the click, "Red gain" and "green gain", "Blue Gain" is active, valid values are (0-255) and the default value is 128. Click **【OK】** to complete the setting.



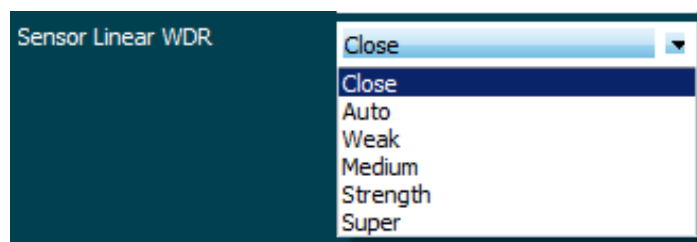
③、AE Mode

It have automatic mode and manual mode, the manual mode when the click, "Gain Control" is active, valid values are (0-255) and the default value is 128. Click **【OK】** to complete the setting.



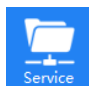
④、Sensor Linear WDR

WDR technology allows you to simultaneously see both indoor and outdoor environments. Click on the drop-down menu to select level. Click **【OK】** to complete the setting.



2.1.9、Service Settings



Click  to enter service settings. You can upload motion detection alarm, alarm image, or alarm video to your e-mail address and FTP server address that you filled in. In order to facilitate inquiries, you can set up DDNS domain name to access your IPC. And DDNS type inclouds Oray, NO-IP and Dyn.

☒ My Server Requires Authentication

A/c.Name: smtpuser FTP Server: 192.168.1.1 Port: 21

Password: User Name: ftpuser

Sender: user@domain.com Password:

SMTP Server: smtp.domain.com Port: 25 FileUpload: default_folder

Email: user@domain.com

☒ Enable DDNS

DDNS Type: Oray Site Name:

DDNS Account: DDNS Password:

Connection Status: Authentication failed Service Type: Ordinary user

Links to service providers: [Oray DDNS to apply](#) [Oray DDNS to help](#)

☒ Video Password Authentication

Ok Cancel

①、SMTP Email Settings

A/c.Name: smtpuser

Password:

Sender: user@domain.com

SMTP Server: smtp.domain.com Port: 25

Email: user@domain.com

【A/C.Name】 It can be set according to user's demands.

【Password】 Fill in the password of the sender mailbox.

【Sender】 Fill in the complete address of the sender mailbox.

【SMTP Server】 Fill in your email server and which ports (server and port can be found in your mailbox registered official website).

【Email】 The complete address of the receives mailbox.

②、FTP Server Settings

FTP Server	192.168.1.1	Port	21
User Name	ftuser		
Password	••••		
FileUpload	default_folder		

【FTP Server】 Fill in the FTP server address and port number.

【User Name】 Fill in the FTP server username.

【Password】 Fill in the FTP server password.

【FileUpload】 Automatically creates a folder that you named in the FTP storage path.

③、Enable DDNS

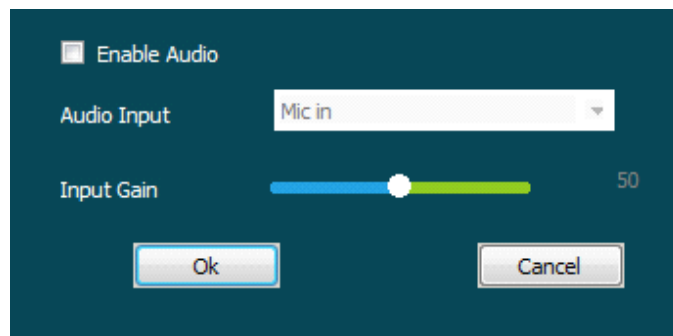
DDNS (Dynamic Domain Name Server), click the link to register DDNS service account . Fill in the account name and password that you registered. Then you can access your IPC through DDNS. (Note: IPC must be connected to the Internet)

<input type="checkbox"/> Enable DDNS			
DDNS Type:	Oray	Site Name:	
DDNS Account:		DDNS Password:	
Connection Status:	Authentication failed	Service Type:	Ordinary user
Links to service providers: Oray DDNS to apply		Oray DDNS to help	

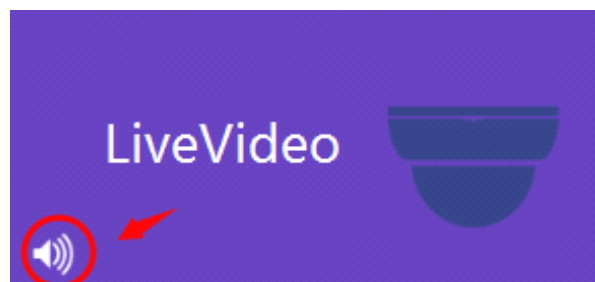
2.2.0、Audio Settings




Click **Audio** and check the **【Enable Audio】** to open the audio, pull the bar to set the input volume (range 0-100). Click **【OK】** to complete the setting.

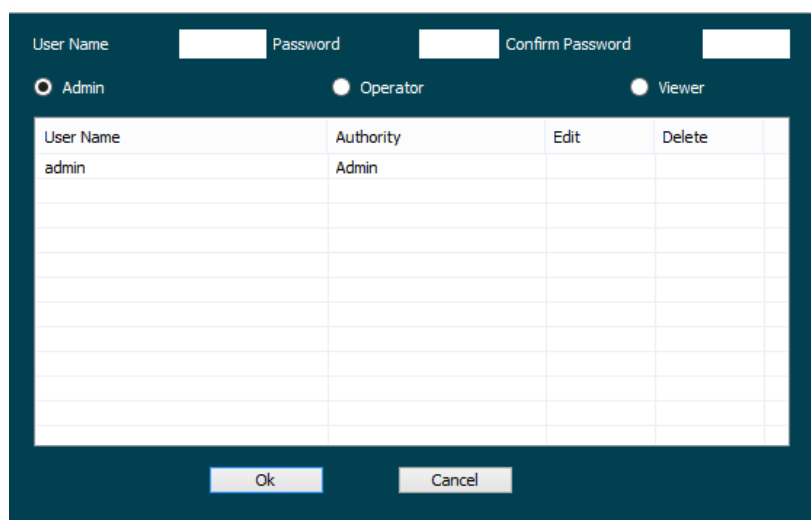


Note: In the LiveVideo window, click to open a small speaker, you can listen to monitor sound coming IPC. As shown below:



2.2.1、User Management


Click  into the user management, where you can modify the original account password, create / delete an administrator account, create / delete common user accounts, and create / delete guest account, a total of 10 accounts can be created. Wherein the system administrator account can not be deleted



User Name	Authority	Edit	Delete
admin	Admin		

2.2.2、Network



Click  to enter the network setting, where you can manually change the IP address of the IPC, the **default** gateway, net mask, port, etc., and open DHCP, P2P function.

☐ EnableDhcp

IP Address: 192.168.1.168

Netmask: 255.255.255.0

Default Gateway: 192.168.1.1

DNS: 192.168.1.1

HTTP Port: 80

☒ **FREEIP**

Connect Status:

Connect Successful

9853231623292

IOS APP

Android APP

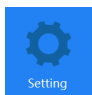
Ok Cancel

【Enable DHCP】The IPC is connected to the router that have opened the DHCP function, check the DHCP option, and the IPC can be get automatically IP address, Net mask, Default Gateway and DNS.

【FREEIP】This function is mainly used mobile client for remote monitoring. Currently, the FREEIP client we offer has Android version and IOS version. Users can be added to the appropriate mobile client by scanning the QR code. (Remote monitoring requirements IPC connected to the Internet)

2.2.3、Video Settings



Click  into the video parameter settings. Here you can set the video resolution and OSD parameters.

The screenshot shows a configuration window for a camera. It has several sections:

- Camera:** A text field containing 'IPC'.
- StreamType:** A dropdown menu set to 'Dual'.
- Codec:** A dropdown menu set to 'H264:1920x1080,H264:640x360'.
- Select Type:** A dropdown menu set to 'H264:1920x1080'.
- Overlay Setting:**
 - ☒ Time: Date Format is 'YYYY/MM/DD'.
 - ☒ OSD Text: Text is 'S2L33M_IMX322_X_5.1.31.2'.
- stream 1 / stream 2:** A sub-window with settings for:
 - Framerate: 30 fps
 - Bit Rate: 3072 Kbps
 - Rate Control: CBR
 - I Frame Interval: 1 Sec
- OSD Position:** A dropdown menu set to 'Top_Left'.
- Mirror:** A dropdown menu set to 'OFF'.
- Buttons:** 'Ok' and 'Cancel' at the bottom.

【Camera】 Setting your camera name.

【Stream Type】 Here Single/Double available.

【Codec】 Choose coding and resolution.

【Select Type】 The different type, the live video will show you different resolution.

【Overlay Setting】 It allows you to set the Time Format, OSD Position and OSD Text, and will be displayed in the preview screen.

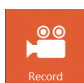
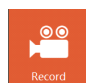
【Framerate】 25fps adjustable (PAL); 30fps adjustable (NTSC). (Note: frame rate is too low will cause the video caton)

【Bit Rate】 Support 64–12000kbps. The higher the bit rate the better video quality, but it occupy the greater network bandwidth and the greater the pressure transmission.

【I Frame Interval】 IPC acquisition keyframe interval, can be set 1–5s.

2.2.4、Record

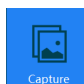


Click  to start recording, monitoring page will have red "Rec". Click  again to end recording and it will automatically pop up the video file location.



2.2.5、Capture



Click  to start capturing, it will automatically pop up the picture file location.

2.2.6、Strolage

You can set the storage path for you record video files as well as capture files.

3、Frequently Asked Questions

3.1 Why can not access the camera by IE?

Answer: There maybe 4 reasons, Details are as follows:

a. The network unreasonable?

Solution: First you can connect network by PC, check the network cable if it is good. And check the network between the camera and the PC is good.

b. The IP address of the camera is occupied by other device or PC?

Solution: You can connect the camera with your PC directly, and modify the IP address or use the IP search tool.

c. The camera maybe in other network segment?

Solution: Check the IP address and net mask.

3.2 Why can not access the camera after update?

Answer: Clean browser cache.

Steps: open IE, click "Tools" and select "Internet Options", then you can see "Temporary Internet files" and click "Delete Files", it will prompt a dialog you need to check "Delete all offline content" and click "OK".

Also you can click "Start" and select "Run" then enter "cmd", enter "arp -d" in "Command Prompt" interface. Re-access the camera.

3.3 Why can not show the whole interface?

Answer: Close some options of IE.

Steps: Open IE, click "View" and select "Toolbar", close the "Favorites bar", "Status bar" and "Command bar".